

**Disney** DEBIT



Let's create some magic.™

# *Make Holiday Memories* with the Wonder of Disney

Winter**2016**

**Take a journey  
of discovery with  
Disney's *Moana***

Celebrate new  
holiday happenings  
at Disney  
Theme Parks

Play Santa's helper  
with a guide to  
great gifts from  
Disney Store

**Cardmember  
Perks** to make the  
season sparkle

Unwrap more fun with  
news and offers at  
**DisneyDebit.com**



## In This Issue



### HOLIDAY MERRIMENT AHEAD

Disney Theme Parks unwrap sparkling new holiday events and delights to share

Pages 4, 5, 6 & 7



### SEE DISNEY'S MOANA

Set sail for an action-packed adventure in theaters November 23, 2016

Pages 8 & 9



### SHOP 'TIL THEY SMILE

Delight everyone on your holiday list with great gifts from Disney Store and DisneyStore.com

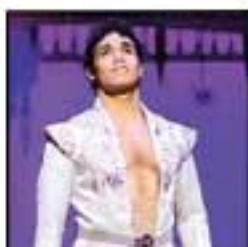
Pages 10 & 11



### ACCEPT YOUR MISSION

Experience *Rogue One: A Star Wars Story* in theaters December 16, 2016

Page 13



### CARDMEMBER-EXCLUSIVE LIMITED-TIME OFFERS

Make the season memorable with tickets to *ALADDIN* and special offers at Walt Disney World® Resort and the Disneyland® Resort

Page 15



## Celebrate a Time of Giving with the Disney Visa Debit Card

Enjoy Disney perks and a dash of character with your Disney Visa® Debit Card from Chase

Learn more at [DisneyDebit.com](http://DisneyDebit.com)



**W**e love the spirit of sharing that fills the holidays...family gatherings, treats for friends, generosity toward others and happy memories that are gifts to last a lifetime. That's why we want to remind you of the many ways your Disney Visa Debit Card can help you celebrate that very special spirit this season.

Think of your Disney Visa Debit Card as an easy, convenient way to pick up all those things you need to make your holidays bright—from giftwrap and cookie ingredients to lights for the house and even gas for running to all those holiday parties. Forgot to pick up a gift for someone special? Your Disney Visa Debit Card is perfect for those last-minute shopping excursions.

Speaking of holiday fun, this season take a journey of discovery with Disney's new animated film, *Moana*, or experience the adventure of *Rogue One: A Star Wars Story*. Then head on over to Disney Store and [DisneyStore.com](http://DisneyStore.com) to bring home adventurous new film-inspired gifts to put under the tree and take advantage of your Cardmember savings of 10% on select merchandise purchases of \$50 or more.<sup>1</sup>

As a Disney Visa Debit Cardmember, you can enjoy a Cardmember-Exclusive Disney Character Experience at our private Cardmember location at Walt Disney World® Resort and the Disneyland® Resort.<sup>2,3</sup> You can also enjoy savings of 10% off select dining locations most days at the Resorts.<sup>4</sup>

Find gifts for everyone on your holiday list. Be sure to check out the *Disney Store Gift Guide* on pages 10 & 11.

Be sure to visit [DisneyDebit.com](http://DisneyDebit.com) for more information on the holiday happenings and how much your Disney Visa Debit Card can offer you and your family. This season we wish you the very best gift of all—memories of laughter, time together and the joy of sharing. Happy Holidays!

# Behold a Season of Light

Since *World of Color*® debuted in 2010 at *Disney California Adventure*® Park, the show has amazed and enchanted Guests with its magical, mystical combination of light, color, water and music. This November, *World of Color*® celebrates the spirit of the holidays with a brand-new show, "World of Color-Season of Light."<sup>5</sup>

"We've done holiday shows before and they've all been beautiful," says John Addis, Show Director, *Disneyland*® Resort Creative Entertainment. "But I'm especially excited about 'World of Color-Season of Light' because we're telling such a different story this time. It's a true holiday show and a timeless celebration of the season. You won't see a show like this anywhere else."

What makes it different? John believes it's the emphasis on classic holiday songs and music. "Music is everything in this show," he says. "We're using all traditional holiday songs performed by some of the great, timeless singers of our time. Musically, the show sounds different from any other *World of Color*® show we've ever done."

The rich, evocative soundtrack is perfectly matched with hundreds of beloved animated Disney film moments. "We're celebrating moments of friendship, of romantic love and the love between parent and child," John says. Marrying the perfect animated moment with the perfect music is a lengthy process. "We've been working on this new show for nearly a year, and I still get chills when the music and the art come together to tell a story and capture an emotion."



John continues, "For instance, in one of my favorite sequences, Guests will see a montage of scenes between Disney mothers and their children, such as Dumbo and his mom and baby Tarzan with Kala while they hear 'Have Yourself a Merry Little Christmas.' The song and the art together create such a sense of tenderness and wonder."

Those aren't the only emotions the show conveys, however. There's plenty to bring a smile to Guests' faces, too, according to John. Lilo and her alien sidekick Stitch appear during a light-hearted rendition of "Mele Kalikimaka," and in a truly inspired moment of fantastical fun, the hippos, alligators and ostriches from the "Dance of the Hours" sequence in Disney's *Fantasia* give their own zany interpretation of the "Nutcracker Suite." "It's very, very funny," John says.

In addition to the all-new soundtrack and animation, "World of Color-Season of Light" will also bring some thrilling never-before-seen water and light effects into play. Because every show needs surprises, we can't reveal all the magic, but according to John, "the grand finale is one of the most beautiful we've ever created."

One of John's favorite viewing spots is on the north side of Paradise Lagoon, across from Mickey's Fun Wheel. "There's a sweet spot between Mickey's Fun Wheel and California Screamin' that offers a great view," he says.

Cardmembers can also take advantage of 10% savings on a dining package at Wine Country Trattoria with preferred viewing for the *World of Color*® show.<sup>6</sup> Visit [Disneyland.com/WorldofColor](http://Disneyland.com/WorldofColor) to make reservations for a night full of wonder and light.

Your holiday wish list will be complete when you visit *Disney California Adventure*® Park this season as you experience "World of Color-Season of Light" and share in all the holiday fun that's in store for you and your family.

# Holidays Through the Years

at the *Disneyland*® Resort

All traditions start with a "first time" you did something. That's certainly true of many of the holiday experiences you and your family can enjoy at the *Disneyland*® Resort. Travel back with us to Christmas past and see how some of the traditions you love today first began.

## HOLIDAY SPIRIT ON PARADE

The first holiday parades at *Disneyland*® Park featured local bands, a few Disney Characters marching alongside homemade floats crafted by community organizations and ethnic groups dressed in their native costumes.



and share in the smiles of today when you watch this year's beloved Christmas Fantasy Parade.

## CANDLELIGHT & CAROLS

The impetus for the entrancing Candlelight Ceremony and Processional, began in 1955 with carolers singing on Main Street, U.S.A., and choirs from local schools and churches performing in the Main Street, U.S.A. bandstand. In 1958, 16 choirs assembled to sing around the flagpole



in Town Square in the first official Candlelight Ceremony. Today, the Candlelight Ceremony and Processional, which is performed on select evenings throughout the holiday season, involves more than 60 carolers from an all-volunteer Disney Cast Choir who form a Living Christmas Tree in Town Square. Singers from local colleges, high schools and churches also march down Main Street, U.S.A. to help ring in the season.



## DECKING THE LANDS

In the *Disneyland*® Resort's early days, decorations were lovely, but simple. Today they have not only become more elaborate, but are also carefully themed to each area of *Disneyland*® Park. Sleeping Beauty Castle glistens with icicles, snow and thousands of lights. Haunted Mansion Holiday inspired by *Tim Burton's The Nightmare Before Christmas* is a sight to see thanks to Jack Skellington and his friends. The exterior of "it's a small world" becomes a light projection show that captures the exuberant spirit of the season.



The spirit glows at *Disney California Adventure*® Park, too. Stroll down Buena Vista Street to enjoy decorations which capture the nostalgic feel of the 1920s and 30s. And visit Cars Land to see how Lightning McQueen and his friends get in gear for the holidays. This year you can explore the unique food, crafts, art and entertainment at the new Festival of Holidays at *Disney California Adventure*® Park. You and your family can join in on all the holiday fun at the *Disneyland*® Resort November 10, 2016 through January 8, 2017.

If all this reminiscing is making you smile as you remember Christmas past at *Disneyland*® Park, don't forget you can create new memories with your family and bring home holiday fun as you save 10% off select merchandise purchases of \$50 or more at select locations at the *Disneyland*® Resort.<sup>8</sup>



## Making Merry Memories at Walt Disney World® Resort

**M**ake a new holiday memory this season with glimmering decorations, laughter-filled shows, parades and fireworks or shopping together for the perfect gifts. At Walt Disney World® Resort, you can find it all. Here's a glimpse of some of the new delights awaiting you this holiday season. Imagine the memories you'll bring home!

### A VERY MERRY NEW SHOW AT MAGIC KINGDOM® PARK

You're invited to a very special celebration when Mickey's Very Merry Christmas Party kicks off for the holidays on select nights from November 7 to December 22. Be awed by a fireworks spectacular. Share the fun of the beloved Mickey's Once Upon a Christmastime Parade. Enjoy free cocoa and cookies at special stations throughout the Park. And this year, gather at the Central Plaza for a brand-new castle stage show, Mickey's Most Merriest Celebration.

"We're so excited about presenting this new show to our Guests," says Denise Case, Show Director, Walt Disney Parks & Resorts Creative Entertainment. "Everything about it is upbeat, high-energy fun."

A show of this magnitude can take a year to plan and develop. "We came up with the idea of Mickey and Minnie hosting a holiday celebration for their friends. After all, they're known for giving the best parties in the world," Denise says.

Twenty-six Disney Characters join in the celebration including Mickey and his gang, as well as Woody, Jessie and Bullseye, Jose Carioca and Panchito from "The Three Caballeros" and many more of your favorite friends from Fantasyland.

This year the innovative new light projections on the castle actually change the look of the castle itself, transforming it into a cozy log cabin, a colorful hacienda and more. "The projections are so magical," Denise says. "It's as if we're taking Guests into different worlds."

The grand finale has something special in store, too. "Imagine all these beloved Disney Characters gathered onstage singing just for you," she says. "I think a moment like that is the best Christmas present we could possibly give our Guests."

### JINGLE BELL, JINGLE BAM! AT DISNEY'S HOLLYWOOD STUDIOS®

Imagine what would happen if Santa went missing! That's the idea behind the brand-new fireworks and light projection show. "Jingle Bell, Jingle BAM!" presented at Center Stage in Disney's Hollywood Studios®. But don't worry, because according to Tom Vazzana, Show Director, Walt Disney Parks & Resorts Creative Entertainment, Wayne and Lanny, the North Pole's top Prep & Landing team, have arrived to take Guests on a fun-filled ride through an amazing variety of Disney Christmas film classics as they search for Santa.

"The team spent hundreds of hours researching Disney films and cartoons to find the perfect holiday footage. We had so much fun," Tom says. "It was like a trip down memory lane for all of us. Hopefully it will be very special for our Guests to see these moments, too."



"We not only show all these wonderful film clips, but the projections also transform the Chinese Theater into everything from the North Pole to the Hundred Acre Wood and even Halloweentown from Tim Burton's *The Nightmare Before Christmas*," Tom says.

"The entire team is especially excited that we're incorporating so much Halloweentown from *Tim Burton's The Nightmare Before Christmas*," Tom explains. "It's the first time at Disney's Hollywood Studios® that we've used this film on such a large scale in a nighttime spectacular."

With a lively new score of iconic holiday music, fireworks, rooftop pyro and snow, "Jingle Bell, Jingle BAM!" concludes on a very merry high note. We can't reveal where Wayne and Lanny finally find Santa, but according to Tom, the fun is definitely in the search!

To bring a holiday memory home with you, take advantage of 10% off select merchandise purchases of \$50 or more at select locations at Walt Disney World® Resort.®



### SHOP, DINE & CELEBRATE THE SEASON AT DISNEY SPRINGS™

Discover what Christmas Florida-style looks like at Disney Springs™, which is celebrating its very first holiday season. Each neighborhood of Disney Springs™ will wow you with unique custom holiday decorations. Be entranced by the sophisticated contemporary look at The Landing, where a tree made of lightbulbs glitters and gleams. Heartwarming traditional garland, wreaths and twinkling lights celebrate the season. Also check out the Florida arts and crafts décor featuring uniquely handmade ornaments at the Marketplace.

As you stroll, keep an eye out for over 20 live musical acts performing nightly, with styles ranging from traditional to pop holiday tunes. Get into the holiday spirit and stop in front of a festive holiday backdrop to snap a photo to send to all your friends. Visit the fountain area by Once Upon a Toy in the Marketplace and be sure to greet Santa in his chalet. "We've created a unique pager system so Guests can enjoy other activities while they wait for their chance to see Santa," Tom says.

And naturally, with over 100 great shops to explore, you can find the perfect presents and stocking stuffers at UNIQLO, Basin®, Vera Bradley, Chapel Hats, Anthropologie, World of Disney® store and more. And your holiday would not be complete without a delicious sweet treat from The Ganachery, Disney's own sophisticated chocolate boutique, or a holiday cupcake from Sprinkles.

When all the fun has worked up your appetite, you'll find dozens of dining options, from casual to upscale. Plan to treat your tummy to a gift, too, with a memorable meal at restaurants like The BOATHOUSE, Chef Art Smith's Homecoming or the elegant Morimoto Asia. Or warm up with a beverage at the Joffrey's Coffee & Tea Co. kiosk or at Tea Traders Café by Joffrey's where you can receive 20% off your entire purchase.⁷ Check out page 15 for a special online offer.

"We are so excited about our first holiday season at Disney Springs™," Tom says. "Everyone at Disney wanted to create a place where Guests could experience a Disney Springs™ hometown holiday where friends and family gather together to celebrate the beauty of the season. I hope visiting will bring back childhood memories for a lot of our Guests and create a lot of new ones as well."

To find out about all the holiday happenings, visit [DisneySprings.com](http://DisneySprings.com).

## Jolly Holiday Happenings

**Mickey's Very Merry  
Christmas Party at  
Magic Kingdom® Park**  
November 7 – December 22, 2016  
(select evenings)

**Holidays Around the World  
featuring Candlelight  
Processional at Epcot®**  
November 25 – December 30, 2016

**"Jingle Bell, Jingle BAM!"  
New spectacular at  
Disney's Hollywood Studios®**  
November 14 – December 31, 2016

**Holidays at Disney Springs™**  
November 11 – January 8, 2017

Learn more about the  
happy holiday happenings at  
[DisneyWorld.com/Holidays](http://DisneyWorld.com/Holidays)



## Share a Journey of Discovery



In theaters  
November 23, 2016



**Three thousand years ago, the greatest sailors in the world voyaged across the vast Pacific, but then for a millennium, their voyages stopped...and no one knows exactly why.**

*Moana*, a sweeping adventure from Walt Disney Animation Studios, tells the story of an adventurous teenager who sails out on a daring mission to prove herself a master wayfinder and save her people from a terrible darkness that threatens their world. During her journey, Moana (voiced by Auli'i Cravalho) meets the demi-god Maui (voiced by Dwayne Johnson), and together they traverse the open ocean, encountering enormous monsters, raging storms and impossible odds.

Ron Clements and John Musker, the renowned filmmakers behind *The Little Mermaid*, *Aladdin*, *The Princess and the Frog*, and now *Moana*, have created a unique heroine whose quest ultimately helps her discover who she truly is and what she wants.

"Moana is courageous, intelligent, athletic and compassionate," says director Ron Clements. "She's also strong-willed and determined. She has to be if she's going to convince Maui, a mischievous and reluctant demi-god, to help her."

But Moana wasn't a character in Ron and John's original story pitch. In fact, she was inspired during the directors' own journey of discovery to the islands of Oceania.

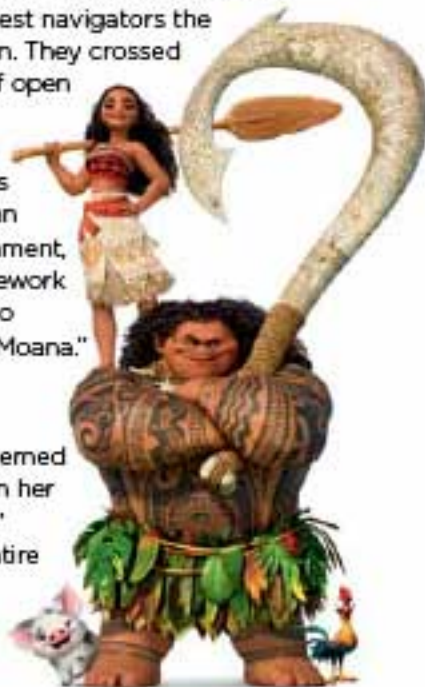
"I have always thought the Pacific Islands would be a beautiful location for an animated film," John says. "I had also read a lot of the mythology of Oceania and was fascinated with stories about the demi-god Maui. He's a trickster, and yet in the

legends, he has done a lot for humans—lifted the sky up, pulled up islands with his magic giant fishhook and given them fire. It seemed like great material for animation."

At first, Ron and John pitched a very simple storyline to John Lasseter, Executive Producer and Chief Creative Officer, Walt Disney and Pixar Animation Studios. "He told us to dig deeper," Ron recalls. "So we traveled to Fiji, Tahiti and Samoa. While there, we met with teachers, linguists, villagers, artists, cultural experts and navigators. We learned so much. It had a huge influence on the story."

One of the key learnings was just how important the islanders' relationship is to the ocean. "There's a real sense of interconnectedness," Ron says. "The ocean isn't seen as dividing people and islands, but connecting them. We also became much more aware of the Oceanic peoples' amazing legacy as navigators. The ancient Oceanic people are considered the greatest navigators the world has ever known. They crossed thousands of miles of open ocean with only their knowledge of the wind, waves, stars and currents. It was an incredible accomplishment, and it inspired us to rework our entire story. It also gave us our heroine, Moana."

When Ron and John started focusing on navigation, Moana seemed to spring to life. "Even her name means 'ocean,'" John says. For her entire life, Moana has felt



called by the sea, yet she's not sure why or what it means. All she knows is that she is drawn to it. Moana is expected to follow in the footsteps of her father, Chief Tui, stay within the boundaries of the reef, and one day, lead her people. But Moana's Gramma Tala, who's the eccentric village storyteller and a very wise woman, is sure that Moana is meant to be a wayfinder, and that the ocean itself has chosen her for the quest.

Moana learns that she needs to recruit the demi-god Maui to assist her in her journey. "It took us a while to figure him out. At first, we gave him amnesia, so he didn't even remember who he was. Then we tried him as a curmudgeonly grump. But that made him too unlikeable," Ron says. John and Ron both credit Dwayne Johnson's performance with helping to find the right balance of humor and heart. "Dwayne made Maui charming, loveable and funny," adds Ron.

"The relationship that builds between Moana and Maui is at the heart of the movie," John adds. "There's really fun interplay between the two of them. At first Maui wants nothing to do with Moana, but she is determined to get him to help on her quest. To see how this girl deals with a powerful, tricky demi-god is just very funny. Eventually the two of them begin to work together toward a shared goal and they develop a strong bond of trust, respect and friendship."

*"Moana's journey isn't just about saving her people. It's also about finding out who she is."* —John Musker, Director

While a host of other memorable characters fill the screen, possibly the most unusual and unexpected is the ocean itself. "Giving the ocean a personality, depicting it as a character, has to be a first in animation," John says. "That idea also came from our trip. The people we met talked about the ocean as if it were alive and as if they had a personal relationship with it. We wanted to capture and convey that feeling."

John and Ron credit the film's special-effects wizards. "They created beautiful water that is alive and emotional. It's nurturing, caring, funny and magical. I think it's unique to this film," John says.

"My hope is that Moana not only inspires the audience to appreciate and learn more about the Oceanic cultures, but enhances their own feeling of interconnectedness with the ocean," Ron concludes. "Moana is such an aspirational role model. She's tough, fearless and empathic. And she's on a voyage I think most of us go on at some time in our lives—trying to figure out who we are, what we want and how we go about finding our true selves."

Share the gift of time with your family this season and take a break from the holiday bustle to experience the laughter, heart and beauty of *Moana* together. It's time to set sail for your own voyage of discovery!



## MAKE WAVES WITH GIFTS INSPIRED BY MOANA

Journeys of imagination begin this holiday season with gifts inspired by memorable moments from Disney's *Moana*. From toys to apparel and accessories, you'll find oceans of *Moana* merchandise.

### STORE YOUR TREASURES

A wayfinder's memories of their journey can be kept in this *Moana* Musical Jewelry Box.



### DRESS FOR YOUR JOURNEY

Young wayfinders will love pretending to set sail dressed in a beautifully detailed *Moana* costume.

### JOURNEY TO DREAMLAND

Adorable Pus and Heihei plush make the perfect snuggle friends for voyages to dreamland and beyond! Press Pus's hooves and he moves and makes noises.



Take advantage of your Cardmember savings of 10% on select merchandise purchases of \$50 or more at Disney Store and [DisneyStore.com](http://DisneyStore.com)!

## Your Guide to Top Gifts

**T**his year, we're giving Santa a little assistance with a list of some of the best gifts at Disney Store and DisneyStore.com. Don't forget to use your Cardmember savings of 10% on select merchandise of \$50 or more, and you'll have your holiday shopping all wrapped up!



**FROZEN ELSA ICE CASTLE** Enchant your princess with Elsa's shimmering ice palace. Plays "Let It Go." Includes Olaf, Sven, Kristoff, Anna, Elsa and sleigh.



**DISNEY ANIMATORS' COLLECTION LILO DOLL** 16" Lilo wants to share the island spirit of Aloha with you. She is outfitted in her bold Hawaiian print dress and includes her best friend, Scrump.



**CLASSIC MOANA DOLL** Beautifully detailed 11" Moana doll comes in a box that can be turned into an outrigger for hours of play.



**DISNEY TSUM TSUM ADVENT CALENDAR** The cutest advent calendar ever! Everyone will love counting down to the holidays with 25 adorable mini Tsum Tsums. Sure to be a favorite!

**DRESS-UP FUN WITH ELENA** Straight from Avalor! A beautiful costume for the young ruler of your kingdom!



**BELLE DELUXE INTERACTIVE DOLL** A doll to cherish. Beautiful 17" Belle is dressed in a light-up gown that rotates. Includes Mrs. Potts, who sings "Tale as Old as Time."



**BELLE TEA CART** Fun is served! Rolling tea cart includes tea set and Lumiere sings "Be Our Guest."

**MARVEL MEGA FIGURINE SET** Action adventures come to life! Twenty intricately detailed 5" figures include a mix of classic and new Marvel characters.



**WOODY TALKING FIGURE** Howdy, Partners! Pull the string to hear this 16" Woody doll say 19 fun phrases.



**BUZZ LIGHTYEAR TALKING FIGURE** Ready for blast-off! 12" tall Buzz has 15 phrases and sound effects. Features light-up, movable wings and laser lights.



**BB-8 REMOTE CONTROL FIGURE** On track for laughter. 8" droid with remote control, multi-directional track ball motion, lights and speed sounds.

**FAMILY "SHARE THE MAGIC" FUN SLEEPWEAR** A perfect Christmas Eve gift. Dream of Santa while wearing soft, cuddly, coordinated bottoms and tops featuring some of your favorite Disney Characters. Choices for the whole family!



**POWER DREAMS START HERE** Cold nights call for comfy PJs. Star Wars™ fans in your family will love getting snugly in these stylish ones.



## Tsum Tsum Holiday Craft



Take your holiday decorating to light speed with Tsum Tsum. We've created an easy-to-make, do-it-yourself decoration celebrating the season AND Star Wars. Grab a wreath and get crafting!

### STAR WARS TSUM TSUM WREATH SUPPLIES:

- Unadorned white or green wreath
- White or gray spray paint (optional)
- Battery-operated fairy lights
- White pipe cleaners
- Star Wars Mini Tsum Tsum
- Star Wars AT-AT Die Cast Vehicle
- Star Wars Millennium Falcon Die Cast Vehicle
- Sparkly decorative snowflakes
- Small ornament balls
- Festive greenery



★ Use white wreath or spray a green wreath with 2-3 coats of white or gray paint. Let dry between coats. Weave fairy lights through the wreath with battery pack on the back. Secure with white pipe cleaner. Trim excess pipe cleaner.



★ Secure layers of sparkly snowflakes on the wreath with pipe cleaner. Attach Star Wars die cast vehicles and Tsum Tsums by wrapping with pipe cleaners and then securing to the wreath. You've taken your holiday decorations into a whole new galaxy of imagination!

Visit Disney Store and DisneyStore.com to pick up your favorite Disney Tsum Tsums for your holiday craft.

## A Whole New World Live on Stage

**You won't need three wishes granted in order to see *ALADDIN*, the hit Broadway musical. Beginning in April 2017, Genie, Aladdin, Jasmine and a stage full of awe-inspiring performers, sets, costumes and special effects will hit the road when the North American tour opens in Chicago.**

*ALADDIN*, which has been seen by over two and a half million people worldwide, premiered in Toronto in 2013 before opening on Broadway at the New Amsterdam Theatre in March 2014.

The theatrical sensation that has set audiences around the world humming "Friend Like Me" began in early 2010 when Thomas Schumacher, President & Producer of Disney Theatrical Group, thought of developing a script of the classic Disney animated film to license to amateur theater groups. But when he approached Oscar®-winning composer Alan Menken, who wrote the score for the animated film with the idea, Alan saw an even bigger opportunity. "It's always been a dream of mine to somehow restore the telling of *ALADDIN* the way Howard Ashman, the film's lyricist, and I first envisioned it," Alan says. "The Disney film is a dazzling action-adventure tale with great animation effects and a handful of memorable songs, some with lyrics by Howard and some by the great Sir Tim Rice. But the original concept was more of a tribute to the classic Bob Hope and Bing Crosby 'on the road' movies and a celebration of jazz from the 1930s and 50s."

"I had a whole treasure trove of existing material that wasn't used in the film including songs for the main characters, as well as characters who were cut from the film such as Aladdin's three sidekicks, Babkak, Omar and Kassim," Alan recalls.

As work on the musical began, it quickly became apparent that new songs were needed to expand the story into a full-length stage production. Chad Beguelin, an accomplished Tony® nominee who was writing the stage script, was tapped to write lyrics. "Chad was absolutely terrific at creating new songs that fit perfectly with those Howard, Tim and I had written for the film," Alan says.

Of all the new musical selections, one song in particular stands out for Alan. "Proud of Your Boy," a song written for Aladdin to sing to his mother, was cut from the film early on (along with Aladdin's mom). It was a loss that hit Alan especially hard because his long-time musical partner, Howard, had died before the film score was finished. "I've had a lot of songs cut in my career, but this was one of the hardest," Alan recalls. "The song packs an enormous emotional punch. So many of us go through a stage in life when we disappoint our parents, or we think we have. I am so happy that Howard's song once again has pride of place in the story of a boy who became all a mother could wish for in a son."

And now *ALADDIN* is about to begin its journey across the country. As a Cardmember you can get advance tickets for Chicago performances and experience the soaring music, over-the-top dance numbers and glittering sets and costumes of *ALADDIN* (see page 15 for details). Packed with more magic than a genie's lamp, *ALADDIN* is sure to transport you and your family to a whole new world of music, laughter and enchantment.

Courtney Reed & Adam Jacobs in "Aladdin" Photo by Dean van Meer  
Jamez Monice Iglesias in "Aladdin" Photo by Gylla von Tiedemann

12

Learn more at [DisneyDebit.com](http://DisneyDebit.com)  
WINTER 2016

### FASCINATING FACTS

The stunning costumes in *ALADDIN* are such a feat of imagination, color, whimsy and creativity, they could have been conjured up by Genie himself.

♥ 337 costumes in the show, based on 136 individual designs.

♥ 161 custom-made shoes.

♥ 1,225 different fabrics from 9 different countries are used for the show's costumes.

♥ 108 of the costume changes take place in less than one minute.

♥ 58 costume changes take place in less than 30 seconds.

♥ 2.1 million Swarovski crystals adorn the show's costumes. In fact, just one costume piece in the finale of the show-stopping number "Friend Like Me" contains 1,428 sparkling beads!



Tip

Headed to New York City?

Don't forget Cardmembers receive

an exclusive Cardmember VIP package with the purchase of premium tickets to see *ALADDIN* or *THE LION KING* on Broadway.® See [DisneyDebit.com/Broadway](http://DisneyDebit.com/Broadway) for more details.



## The Adventure Lives On



In theaters  
December 16, 2016

**Who were the early resistance fighters? What gave them the courage to mobilize? How did their struggle against the Empire begin? At some point, everyone who has ever been swept up in the epic storytelling adventure of *Star Wars* has pondered these questions.**

*Rogue One: A Star Wars Story*, which premieres in theaters December 16, will satisfy some of that yearning to know more. The stand alone film is directed by Gareth Edwards,

produced by Kathleen Kennedy, and stars Felicity Jones, Diego Luna and Ben Mendelsohn. It goes back in time to reveal the story of early resistance fighters who have united to steal plans to the dreaded Death Star.

Story development began well over two years ago, and Gareth likens the process to carving a sculpture. "You don't dictate the story or force it into a preconceived mold," he says. "You let it reveal itself. It's like chipping away at a rock and gradually the story reveals itself to you. You're discovering it as you go. If you let it, the story tells you what it wants to be. You have to listen to it."

The process is made even more challenging when working within such a deep and thoroughly loved mythology like *Star Wars*.

"Every step of the way, we had to ask ourselves what makes something uniquely part of the *Star Wars* storytelling legacy," Gareth says. "We wrote down everything that makes a story a *Star Wars* tale. We all have different opinions, of course, but some of the absolutes are the epic backdrop, the story of a family relationship that has been splintered and torn apart, and the fundamental pull between good and evil."

"We took those elements and gave them a twist or even went for the opposite to see what kind of story it would create. For instance, instead of a hero, we have a heroine, Jyn Erso, a female soldier who fought for the Alliance," Gareth says.

The story dictated a cast of new characters. "*Rogue One: A Star Wars Story* is definitely affected by the characters that inhabit the original movies," Gareth explains. "But the new characters are at the heart of the film. We wanted to explore how everyday people have been caught up in the conflict with the Empire. For instance,

Jyn Erso is pulled into the struggle by something that has happened to her in the past. She doesn't start off wanting to be a soldier, but she's been dealt a bad hand and chooses to do something about it."

Not every character is serious, however. This is a *Star Wars* film, after all, and humor always plays a role. One of Gareth's favorite characters is the robot K-2SO, played by Alan Tudyk. "Alan had to wear this rather silly-looking outfit with dots on it while we were filming, and he always felt like the uncool guy on the set surrounded by actors in super cool costumes. I would tell him, 'Alan, don't worry. You're going to steal every scene you're in.' And I was right. Once we put the robot overlay in, he was fantastic. He brings a lot of humor to the film."

*"Every step of the way, we had to ask ourselves what makes something uniquely part of the STAR WARS storytelling legacy."*

-Gareth Edwards, Director

We asked Gareth if it was ever intimidating to be working with such a world-renowned and beloved mythology. "I could feel the pressure to get the story right," he admits. "But I grew up with *Star Wars* and have loved it since I was a kid, so it was a little like I'd been training all my life for this new film, as if I was going back to my childhood. There were times when I was standing next to some stormtroopers or a space ship and felt like 'Oh, I'm home.'"

"But I also know that in a way all of us are simply the caretakers for this amazing legacy. *Star Wars* doesn't belong to me...perhaps not even to Disney or Lucasfilm. Emotionally it belongs to the world. It's quite a responsibility and an honor to be part of it."

Share *Rogue One: A Star Wars Story* with your family this holiday. Then send your *Star Wars* fans into orbit with cool film-inspired merchandise at Disney Store and [DisneyStore.com](http://DisneyStore.com). Go on a gift-finding mission and take advantage of your Cardmember savings of 10% on select merchandise purchases of \$50 or more!



Learn more at [DisneyDebit.com](http://DisneyDebit.com)  
WINTER 2016

13

**\*Merchandise Savings at Disney Store:** 10% off Restrictions: Offer valid only at Disney Store and Disney Baby Store retail locations in the U.S. or orders placed online at DisneyStore.com. A \$50 minimum pre-tax single transaction purchase is required to receive discount. Offer excludes Shipping & Handling, Theme Park Passes, Disney INFINITY, Disney Electronics, DVDs, Blu-ray™, CDs, Video Games, Books, Art & Collectibles, Jim Shore, Lenox®, Enesco Busto and Figurines, DZSewski, Precious Moments, Vinylmation, Limited Edition and Limited Availability merchandise, D23 Memberships, D23 Merchandise, gift cards or certificates, Disney Dollars, The Walt Disney Company Collectible Shareholder Certificate, 3-D printed merchandise, Subscription products, Playmation™, personalization, gift wrap and gift boxes and items not in stock. Not valid on purchases at The Disney Studio Store Hollywood & Ghirardelli Soda Fountain Shop. *World of Disney®* locations are not operated by Disney Store and this offer is not valid at *World of Disney®* locations. Cannot be combined with other discounts. No adjustments to prior purchases. Prices subject to change without notice. Products subject to availability. Payment with valid Disney Visa Card and/or Disney Rewards Redemption Card is required. Promotion Code may not be redeemed for cash, sold, or altered. Internet distribution strictly prohibited. Use of offer or Promotion Code DRYMEMBER constitutes acceptance of these offer terms. Offer may be canceled or modified at any time. Void where prohibited. Chase is not responsible or liable for fulfillment of this offer.

**\*Disney Theme Park Perks:** Offers and offer elements including, but not limited to, participating locations, are subject to availability and additional restrictions, and may change or be canceled without notice. Must use a valid Disney Visa Card and/or Disney Rewards Redemption Card to receive special offers. Merchandise discount may not be available for certain items and at certain locations including *Disneyland®* Resort and *Walt Disney World®* Resort Operating Participant locations and any other locations or kiosks that are not owned and operated by the owners of the *Walt Disney World®* Resort and the *Disneyland®* Resort. To receive a merchandise discount, you must mention the specific offer. For entry into the Disney Character Experience Photo Opportunity, must present your valid Disney Visa Debit Card. Not valid in combination with other offers, discounts, promotions or with any previous purchase. Minimum purchase and/or separate admission may be required. Offers are for personal use only and may not be transferred or resold. Please visit [DisneyDebit.com/Perks](http://DisneyDebit.com/Perks) for full terms and conditions for each offer. Chase is not responsible or liable for fulfillment of these Disney Theme Park perks.

**\*Character Experience:** The *Disneyland®* Resort Character Experience Photo Opportunity is offered daily during set hours at *Disney California Adventure®* Park and the *Walt Disney World®* Resort Character Experience Photo Opportunity is offered daily during set hours at *Epcot®*. Separate Theme Park admission required for each Character Experience Opportunity. Must present a valid Disney Visa Debit Card for entry for up to 6 people per cardmember account (each cardmember account may be used for entry only one time per day). Operating times, days of the week, locations and appearance of Characters may vary and are subject to restrictions and change or cancellation without notice. Offer includes complimentary downloads of your *Disney PhotoPass®* photos taken at the Disney Visa Character Experience location that are associated to your Disney account. To access complimentary downloads of your *Disney PhotoPass®* photos taken at the Disney Visa Character Experience location at the *Disneyland®* Resort, go to [Disneyland.com/photopass](http://Disneyland.com/photopass) or at the location at *Walt Disney World®* Resort go to [MyDisneyPhotoPass.com](http://MyDisneyPhotoPass.com) and then log-in using your existing account or create an account. MagicBands or other medium scanned by the photographer at the time of capture must be linked to your My Disney Experience Profile at *Walt Disney World®* Resort or linked to your *Disneyland®* Resort account, or you may claim PhotoPass cards provided to you by the photographer by entering the PhotoPass ID number found on the back of your PhotoPass card. One photo session per valid cardmember account per day. Offer not valid for photos taken at other *Disney PhotoPass®* locations or attractions photos. Photos will expire pursuant to the expiration policy at [Disneyland.disney.go.com/photopass-expiration-policy](http://Disneyland.disney.go.com/photopass-expiration-policy) or [MyDisneyPhotoPass.disney.go.com/help-and-support](http://MyDisneyPhotoPass.disney.go.com/help-and-support). Not responsible for missing, lost or damaged photos. Not valid in combination with other offers, discounts or promotions. Offer is for personal use only and may not be transferred or resold. Please visit [DisneyDebit.com/Perks](http://DisneyDebit.com/Perks) for additional information.

**\*Dining Savings at Disney Parks:** Offer excludes alcoholic beverages, merchandise, tobacco, room service, holiday buffets, tax and gratuity. Must use your valid Disney Visa Card and/or *Disney Rewards* Redemption Card at time of purchase. Discount valid at the following restaurant locations: *Walt Disney World®* Resort—Disney's Animal Kingdom Lodge & Villas: Boma, Jiko (see restrictions); and Sanaa; *Disney's BoardWalk Inn & Villas:* ESPN Sports Club and Flying Fish Cafe (see restrictions); *Disney's Caribbean Beach Resort:* Shutters at Old Port Royale; *Disney's Contemporary Resort:* The Wave; *Disney's Fort Wilderness Resort & Campground:* Trail's End Restaurant; *Disney's Grand Floridian Resort & Spa:* Citricos (see restrictions), Grand Floridian Cafe, and Narcoossee's; *Disney's Old Key West Resort:* Olivia's Cafe; *Disney's Polynesian Village Resort:* Kona Cafe; *Disney's Port Orleans Resort:* Boatwright's Dining Hall; *Disney's Saratoga Springs Resort & Spa:* The Turf Club Bar and Grill; *Disney's Wilderness Lodge:* Artist Point (see restrictions) and Whispering Canyon Cafe; *Disney's Yacht Club Resort:* Captain's Grille and Cape May Cafe; *Disney's Hollywood Studios®:* The Hollywood Brown Derby (see restrictions) and Hollywood & Vine (see restrictions); *Epcot®:* Bountiful Restaurant (see restrictions), Coral Reef Restaurant (lunch only), Le Cellier Steakhouse (lunch only), and Rose & Crown Dining Room (lunch only); and ESPN Wide World of Sports Complex: ESPN Wide World of Sports Grill. For locations where it is noted to see

restrictions, the discount does not apply to the following dates: 11/24/16, 12/24/16, 12/25/16, 12/31/16, 1/1/17, 2/14/17, 4/17/17, 5/14/17 and 7/4/17. The *Disneyland®* Resort—*Disneyland®* Park: French Market and River Belle Terrace; *Disney California Adventure®* Park: Codina Cucamonga Mexican Grill, Wine Country Trattoria, and Paradise Garden Grill; *Disneyland®* Resort Hotels: Steakhouse 55, Disney's PCH Grill and Storytellers Café. *Disney's Vero Beach Resort:* Shutters and Sony's. Subject to restaurant operating hours and closures. Offer and offer elements including, but not limited to, participating locations, are subject to availability and additional restrictions, and may change or be canceled without notice. Not valid in combination with other offers, discounts or promotions. Separate admission may be required. Discount is for personal use only and may not be transferred or resold.

**\*Disneyland® Resort:** Attractions and entertainment may be seasonal and are subject to change without notice.

**\*Merchandise Savings at Disney Parks:** A \$50 minimum pre-tax single transaction merchandise purchase is required to receive discount. Must use your valid Disney Visa Card and/or *Disney Rewards* Redemption Card as payment form and mention this offer. Discount is not valid on previous purchases or on purchases of ticket media, gift certificates, Disney Gift Cards, Park Admission, Arcades, Disney Dollars, tobacco, alcohol, Outdoor Vending (e.g., in-Park balloon vendors, glow vendors), Add-a-Dollar (Wildlife Conservation Fund), postage stamps, rentals (e.g., strollers, ECV), personalization including D-Tech Me figures, *Disney PhotoPass®* online purchases, PhotoPass+ and Memory Maker, framed Disney Dollars, Artist Sketch Program, original or consignment art, select limited editions, select specialty items, purchase-with-purchase offers, newspapers/periodicals, books, videos, DVDs, CDs, sundries, pantry/prepared foods, digital/video/disposable cameras, film, consumer electronics, National branded fragrances, treatments and cosmetics, Swarovski® Crystal, select collectibles, handmade items, special orders, Bibbidi Bobbidi Boutique and Pirate League packages (at *Walt Disney World®* Resort), phone, email or mail order purchases, shipping or taxes of Authentic Hawaiian Collectibles. Discount does not apply at the following locations at the *Disneyland®* Resort: Midway Games, Fairytale Arts, Jewel of Orleans, Silhouette Studio, Portrait Artists, Parasol Cart, Heraldry Shop, Crystal Shops (Crystal Arts and Cristal d'Orleans), face painting locations, or at any *Downtown Disney®* District location other than *World of Disney®* Store, D Street, Disney Vault 28, WonderGround Gallery, Marceline's Confectionery, Disney's Pin Traders and Anna & Elsa's Boutique. Discount is not available at Cast Connection, Disney's Character Premiere, Disney's Character Warehouse or *Walt Disney World®* Resort Operating Participant locations and any other locations or kiosks that are not owned and operated by the owners of the *Walt Disney World®* Resort, except for Bash®, Bash White®, Chapel Hats, Good Fortune Gifts and House of Good Fortune, KidsHeritage, Marrakesh Emporium Arts & Crafts, Joffrey's coffee/tea kiosks and Tea Traders Café by Joffrey's. Offer and offer elements including, but not limited to, participating locations and items, are subject to availability and additional restrictions, and may change or be canceled without notice. Not valid in combination with other offers, discounts or promotions. Separate admission may be required. Discount is for personal use only and may not be transferred or used to purchase merchandise with the intent to resell the merchandise.

**\*Operating Participant Savings:** Offers subject to restrictions and change without notice. For merchandise locations, a \$50 minimum pre-tax single transaction purchase is required to receive discount. Must use your valid Disney Visa Card as payment form and mention this offer. Separate admission may be required. Respective offer is provided and fulfilled solely by the applicable *Walt Disney World®* Resort Operating Participant locations. Disney and Chase are not responsible or liable for fulfillment of such offers, products or services. Not valid in combination with other offers, discounts, promotions or with any previous purchase. Discount may not be valid on select specialty items.

Joffrey's: Must mention offer when ordering. Not valid in combination with other offers. Online discount applies to U.S. orders only, limit one coupon per order.

**\*Broadway Theatrical VIP Package:** With each premium ticket purchased through the offer code (first four digits of card), cardmembers will receive a VIP package. Blackout dates and other restrictions may apply. VIP ticket holders may pick up their VIP packages by showing their Disney Visa Card at the New Amsterdam Theatre or Minskoff Theatre box office prior to the performance. Vouchers for complimentary drink and keepsake photograph have no cash value. Vouchers may not be used on other merchandise or tickets, concessions or other items. Offer only valid for performances purchased with offer code. All vouchers will be honored and fulfilled upon availability of product. Offer not valid on prior purchased tickets and may not be combined with any other offer. Offer may be revoked without notice. ALL SALES FINAL. No refunds. Standard Ticketmaster service fees apply to online or phone orders. The *Lion King* VIP Package prices include a \$2.00 facility fee per ticket. *Aladdin* VIP Package prices include a \$2.50 facility fee per ticket. Dates, times, prices, and cast subject to change without notice. Limit 20 tickets per person per 7-day period. Must use a Disney Visa Card for purchase. *Disney Dream Reward Dollars* cannot be redeemed toward ticket purchases for Disney Live Events, including Disney on Broadway (in New York City and on tour), Disney on Ice, and Disney Live! Productions.

**Cardmember Offers:** Offers made by Disney, JPMorgan Chase Bank, N.A. and its affiliates are not affiliates of Disney and are not responsible for offer fulfillment.

JPMorgan Chase Bank, N.A. Member FDIC  
© 2016 JPMorgan Chase & Co.  
SM, © Disney and its related entities.

# Advance Tickets for ALADDIN in Chicago!

Over 2.5 million people have experienced the magic of *ALADDIN* around the world. Now it's Chicago's turn!

From the producer of *THE LION KING* comes this thrilling production, featuring all of your favorite songs from the film and new music written for the stage. Discover a whole new world of daring adventure, captivating romance and breathtaking spectacle at the theatrical sensation audiences and critics agree is "Exactly what you wished for!"—NBC-TV



As a Disney Visa Debit Cardmember, you can purchase tickets before they go on sale to the general public when you order by December 4, 2016 and use your Disney Visa Debit Card. This offer is valid for all performances from April 11 to July 2, 2017.\*

Visit [DisneyDebit.com/Chicago](http://DisneyDebit.com/Chicago) for more details and to order your tickets today.

\*ALL SALES FINAL. No exchanges or refunds. Blackout dates and other restrictions may apply. Dates, times, prices, and cast subject to change without notice. Standard Ticketmaster service fees apply to online or phone orders. Offer may be revoked without notice. Limit 14 tickets per person per 7 day period. All prices include a \$3.00 facility fee. Tickets must be purchased by December 4, 2016. *Disney Dream Reward Dollars* cannot be redeemed toward ticket purchases for Disney Live Events, including Disney on Broadway (in New York City and on tour), Disney on Ice, and Disney Live! Productions.

## Zoned for Fun!

Earn top scores with the family when you dine at *ESPN Zone®* restaurant. A great place to work up an appetite with games, sports and more.



At *ESPN Zone®* restaurant, get 10% off your total food and beverage (pre-tax) check and get 10% off a single retail merchandise purchase of \$50 or more (pre-tax) with your Disney Visa Debit Card.\*\*

\*\*Offers valid at *ESPN Zone®* restaurant. Dining discount is not valid on alcoholic beverages or private events. Merchandise discount does not apply toward the purchase of gift certificates. Discounts apply only on amounts charged to a Disney Visa Card. Limit one dining and merchandise discounted purchase per day. Offers are not redeemable for cash. Cannot be combined with other offers or previous purchases. Excludes taxes and gratuity. Subject to change without notice. Valid through 9/30/17.

Limited-Time Offer

## Get a Free Travel Mug from Joffrey's Coffee

Purchase any 3 artisan roasted Disney Parks & Resorts Specialty Coffees from Joffrey's Coffee & Tea Co. with your Disney Visa Debit Card and receive a 16 oz. stainless steel travel mug with purchase.\*\*\*

Visit [Joffreys.com/DisneyVisa](http://Joffreys.com/DisneyVisa) to order. **PROMO CODE: TRIO**

\*\*\*Limit one free mug per customer. Free ground shipping on orders of \$50 or more (U.S. only). Use your valid Disney Visa Debit Card for payment. Disney Gift Cards not valid for this offer. Cannot be combined with other promotions. Offer expires January 30, 2017. While supplies last.

